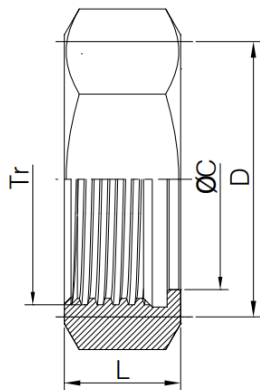


## Tuerca unión completa Bevel Seat

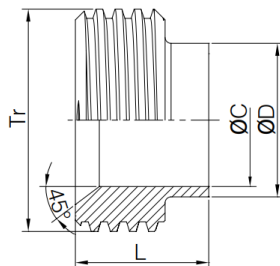


<b>TIPO DE ACERO:</b>	T-304
<b>TEMPERATURA DE TRABAJO:</b>	-10°C + 150°C (EPDM) -20°C + 120°C (Silicón)
<b>ACABADO:</b>	Superficie interna: Ra ≤ 0.8 μm Superficie externa: Ra ≤ 1.6 μm

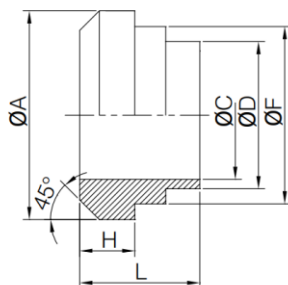
### DIMENSIONES (mm)



TUERCA HEXAGONAL (BEVEL SEAT UNION)				
SIZE	C	D	Tr	L
1"	30.3	46	38.02X1/8 TACME	23.0
1 1/2"	43.4	61.1	51.54X1/8 TACME	24.6
2"	56.5	76.2	65.05X1/8 TACME	27.0
2 1/2"	69.6	91.3	78.56X1/8 TACME	30.15
3"	82.7	106.4	92.08X1/8 TACME	32.5
4"	108.9	137.6	120.14X1/8 TACME	38.1



FERRULA ROSCADA (BEVEL SEAT UNION)				
SIZE	C	D	Tr	L
1"	22.1	25.4	38.13X1/8 TACME	34.9
1 1/2"	34.8	38.1	50.65X1/8 TACME	38.1
2"	47.5	50.8	64.17X1/8 TACME	38.1
2 1/2"	60.2	63.5	77.6X1/8 TACME	44.5
3"	72.9	46.2	91.19X1/8 TACME	44.5
4"	97.4	101.6	119.25X1/8 TACME	44.5



FERRULA CONICA LISA (BEVEL SEAT UNION)						
SIZE	A	C	D	F	H	L
1"	33.3	22.1	25.4	29.5	7.9	34.9
1 1/2"	46.8	34.8	38.1	42.6	8.7	38.1
2"	60.3	47.5	50.8	55.7	10.3	38.1
2 1/2"	73.8	60.2	63.5	68.8	11.1	44.2
3"	87.3	72.9	76.2	81.9	11.9	44.5
4"	114.3	97.4	101.6	108.1	14.3	44.5