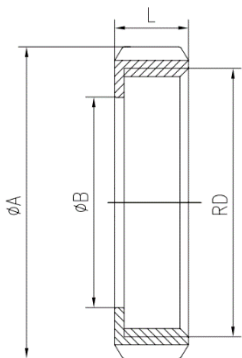


Tuerca unión completa DIN

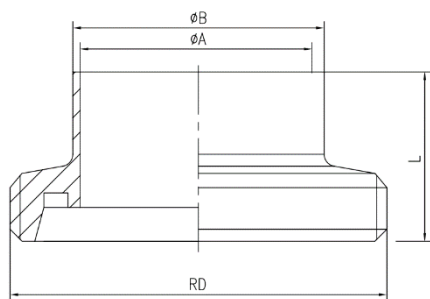


TIPO DE ACERO:	T-304
TEMPERATURA DE TRABAJO:	-10°C + 150°C (EPDM) -20°C + 120°C (Silicón)
ACABADO:	Superficie interna: Ra ≤ 0.8 μm Superficie externa: Ra ≤ 1.6 μm

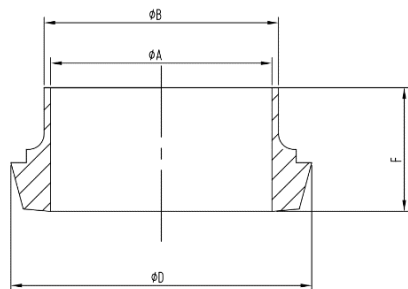
DIMENSIONES (mm)



TUERCA DIN				
SIZE	A	RD	B	L
25	63	RD52*1/6"	36	21
40	78	RD65*1/6"	49	33
50	92	RD78*1/6"	62	35
65	112	RD95*1/6"	80	40
80	127	RD110*1/6"	94	45
100	148	RD130*1/6"	115	54



FERRULA ROSCA DIN				
SIZE	B	A	RD	L
25	28/29	25/26	RD52*1/6"	29
40	40/41	37/38	RD65*1/6"	33
50	52/53	49/50	RD78*1/6"	35
65	70	66	RD95*1/6"	40
80	85	81	RD110*1/6"	45
100	104	100	RD130*1/6"	54



FERRULA LISA DIN				
SIZE	B	A	D	F
25	28/29	25/26	44	22
40	40/41	37/38	50	26
50	52/53	49/50	56	28
65	70	66	68	32
80	85	81	86	37
100	104	100	100	44