

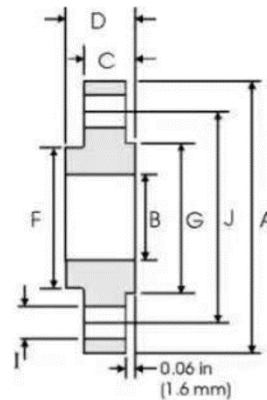
## BRIDA INDUSTRIAL



**TIPO DE ACERO:** T-304  
**PRESIÓN:** 150lbs.

COMPOSICIÓN QUÍMICA (%)								
304	(C)	(Si)	(Mn)	(P)	(S)	(Cr)	(Ni)	(Mo)
	0.08	1.00	2.00	0.045	0.03	18-20	8-11	-

## DIMENSIONES (mm)



Size	A	B (Diámetro interno)	C	D	F	G	N° Barrenos	I (Diámetro barrenos)	J
1"	108.0	34.50	14.20	17.50	49.30	50.8	4	15.70	79.25
1 ½"	127.0	49.50	17.50	22.40	65.00	73.15	4	15.70	98.60
2"	152.4	62.00	19.10	25.40	77.70	91.90	4	19.10	120.7
2 ½"	177.8	74.70	22.40	28.40	90.40	104.6	4	19.10	139.7
3"	190.5	90.70	23.90	30.20	108.0	127.0	4	19.10	152.4
4"	228.6	116.1	23.90	33.30	134.9	157.2	8	19.10	190.5