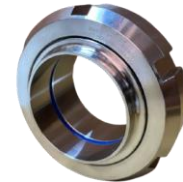


Unión completa SMS



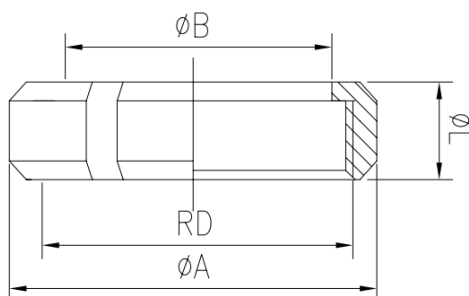
TIPO DE ACERO:	T-304 / T-316L
CONEXIÓN:	SMS

COMPOSICIÓN QUÍMICA (%)								
304	(C)	(Si)	(Mn)	(P)	(S)	(Cr)	(Ni)	(Mo)
	0.08	1.00	2.00	0.045	0.03	18-20	8-11	-

COMPOSICIÓN QUÍMICA (%)								
316L	C	SI	MN	P	S	Cr	Ni	Mo
	0.035	1.00	2.00	0.045	0.03	16-18	10-14	2-3

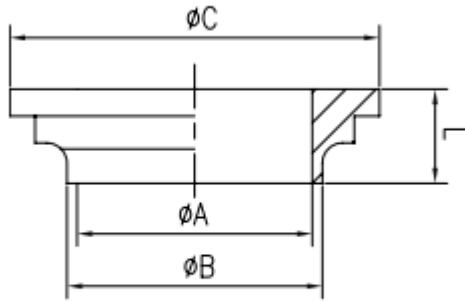
PROPIEDADES MECÁNICAS			
Elongation(%)	Tensile Strength (Mpa)	Yield Strength (Mpa)	Hardness (HB)
Min. 35	Min. 485	Min. 170	Máx. 90

Dimensiones Tuerca SMS (mm)



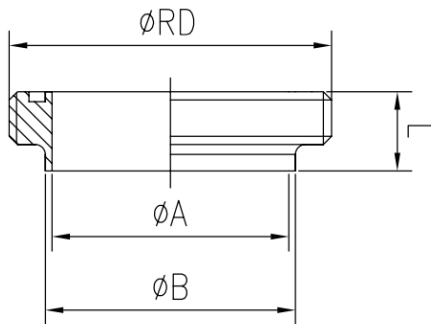
SIZE	A	RD	B	L
1"	51	RD40x1/6"	32	19
1.5"	74	RD60x1/6"	48	23
2"	84	RD70x1/6"	60.5	24
2.5"	98	RD85x1/6"	74	26
3"	114	RD98x1/6"	87	27
4"	140	RD125x1/6"	113	29
6"	196	RD180x1/4"	164	30

Dimensiones Férula lisa SMS (mm)



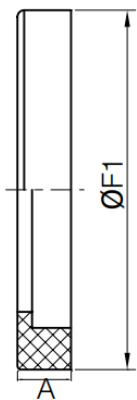
SIZE	A	B	C	L
1"	22.4	25.4	35	13
1.5"	35	38	55	15
2"	48	51	65	15
2.5"	59.5	63.5	80	15
3"	72.2	76.2	93	17
4"	97.6	101.6	120	17
6"	148.4	152.4	173	21

Dimensiones Férula Rosca SMS (mm)



SIZE	A	B	RD	L
1"	22.4	25.4	40x1/6"	18
1.5"	35	38	60x1/6"	20
2"	48	51	70x1/6"	20
2.5"	59.5	63.5	85x1/6"	22
3"	72.2	76.2	98x1/6"	24
4"	97.6	101.6	125x1/6"	25
6"	148.4	152.4	180x1/4"	37

Dimensiones Empaque EPDM para unión (mm)



SIZE	A	F1
1"	5.5	32
1.5"	5.5	48
2"	5.5	61
2.5"	5.5	73.5
3"	5.5	86
4"	5.5	114
6"	5.5	162.4